

# Quick Ship Program\*



Lead time: 5-15 business days, depending on product ordered and quantity.

Note: Supply is subject to availability. We will not be able to fulfill all requests.

## Accent Seating

\$387 list

Finishes: Smooth Silver Frames with CF Stinson's Avant Vinyl



## Kite Metal

16" Seat Width

\$508 list

Finishes: Smooth Silver or Gunmetal



## Integrity Highback Patient Chair

\$958 list

Finishes: Smooth Silver Frames with CF Stinson's Avant Vinyl



## Physician Stools

\$446 list

Finishes: CF Stinson Avant Vinyl



## Royale Bedside Cabinets

\$623 list

Finishes: Hardrock Maple



## Frontier Bed

\$2495 list

Finish: Multiple Colors



## Frontier Bedside Cabinets

\$895 list

Finish: Multiple Colors

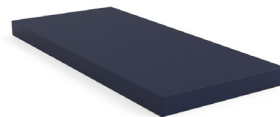


## 5" Behavioral Health Mattress

\$995 list

Length: 80"

Width: 36"



## Emergency Field Bed

\$4950 list - 50 Order Minimum

Length: 81"

Width: 37"

Height: 26"

Mattress Included  
Minimal Assembly Required



## New and Instock

### Bold Seating Collection

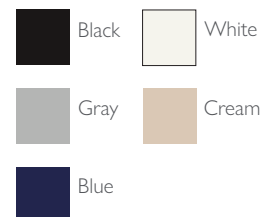
- Limited lifetime warranty
- 300lb weight rating
- Chrome frame with glides
- Easy-to-clean plastic seat and back
- Contoured back for enhanced comfort
- Stacks 6 chairs high



BOC117A  
Width: 17  
Depth: 21  
Height: 33  
List Price: \$245



BOC117A-SL  
Width: 17  
Depth: 21  
Height: 33  
List Price: \$245



\*Depending on product ordered and quantity, email sales@stancehealthcare.com for more information.